



AWARD WINNING HIGH PERFORMANCE 'WISKAWAY'® VISITOR WALLBEDS FOR HOSPITALS AND HOSPICES



WEBSITE



Information for NHS
Trusts, Private Hospitals
and Hospices, Architects
and PFI Contractors



Hospital Visitor Beds

High Performance, Cost and Space Saving Hospital
& Hospice Visitor Wall Beds and Guest Beds.



WORLD CLASS SOLUTIONS TO PROVIDING COST-EFFECTIVE OVERNIGHT FACILITIES FOR PATIENTS' RELATIVES ON BUSY WARDS AND ON-CALL STAFF

'Ultimate' Hospital Visitor Beds

Presenting our space and cost-saving multi-Award Winning, high performance, counterbalanced 'Horizontal' and 'Vertical' 'WISKAWAY'® Visitor Wallbeds. The 'next level' solution to putting up patients' relatives in comfort in Hospitals and Hospices, where space is at a premium, especially parents overnight on Children's and Neonatal Wards and in dedicated Children's Hospitals.

✓ Fully Compliant - Ultra Strong

'WISKAWAY'® Visitor Wallbeds meet all current Infection Control, Health & Safety, Manual Handling and Flame Retardancy requirements. They set unbeatable standards of safety, ease-of-handling, durability, comfort, space-efficiency and value for money. Single 'WISKAWAY'® Visitor Wallbeds will comfortably cope with loads of up to 200kg and doubles with up to 400kg.

✓ Easy To Clean

'WISKAWAY'® Visitor Wallbed frames are made from hand welded, powder-coated steel with a unique pre-tensioned, *non-sag*, woven steel mesh base (no wooden slats to break) and can be cleaned and disinfected just like a conventional Hospital bed, using the same cleaning agents, as can our wipe-clean/waterproof Visitor bed mattresses and bedding straps.

✓ Multiple Safety Features

Safety features include full counterbalancing, automatic leg and Back Rest action and step by step wipe-clean, laminated safety/operating instructions displayed prominently on the front panel of every bed.

✓ 10 Year Guarantee 25 Year-plus Service Life

'WISKAWAY'® Visitor Wallbed frames are engineered to withstand daily heavy-duty Hospital and Hospice use, are guaranteed for a full 10 years and, when properly maintained, will give 25 years-plus of trouble-free service.

✓ Full Spares/After-sales Service

We also offer a comprehensive spares/after-sales service.

About Hospital Visitor Beds

Hospital Visitor Beds have specialised in designing and producing high performance single, double and made to measure 'Horizontal' and 'Vertical' wall beds for over 40 years and are currently the country's leading suppliers of Visitor Wall beds and Guest beds for Hospitals and Hospices.

FREE Pre-Sales Advice Service

In addition to supplying, installing and servicing our 'WISKAWAY'® Visitor Wallbeds, we offer a FREE in-house consultancy service to advise on the best model(s), size(s) for a project - (call us on 020 7439 1066).

Information for Architects

The sizes detailed in this brochure are typical examples, but can be varied (e.g. to fit into tighter spaces/ around pillars/trunking - see pages 3 and 5). Where necessary, we can supply special bed sizes, even in smaller quantities, sloping tops (see picture A below) and special finishes with, or without, matching furniture. Drawings can be provided. We can also advise on the most suitable model(s) and size(s) at the design stage of a project and can supply a sample 'mock up room' bed. Any special requirements? Please ask!

Our Visitor Wallbed Client List

Our 'WISKAWAY'® Visitor Wallbed client list includes Hospitals, Hospices and Children's Units in major Hospitals, as well as dedicated Children's Hospitals throughout England, Scotland and Wales. These include Great Ormond Street Hospital in London, the old Alder Hey Children's Hospital in Liverpool and most of the new Children's Hospitals to be built in recent years, such as the Bristol Royal Hospital for Children, the Royal Aberdeen Children's Hospital, the Children's Hospital for Wales in Cardiff, the Royal Alexandra Children's Hospital in Brighton, the Children's Hospital at the Queen Alexandra Hospital in Portsmouth, the Great North Children's Hospital in Newcastle, the Queen Elizabeth Children's Hospital in Glasgow and the Royal Manchester Children's Hospital.

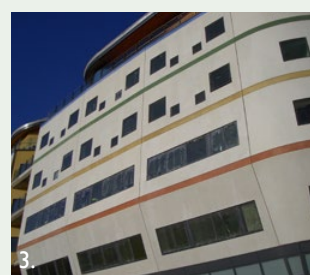
1. The Bristol Royal Hospital for Children. Over 120 parents' wall beds originally supplied and installed with more purchased later, mainly 'WISKAWAY'® 7500H (see p.3) but also some 'WISKAWAY'® 6000H and 6000R (see p.5). We have since serviced these beds.



2. The Royal Manchester Children's Hospital. Over 200 parents' wall beds supplied and installed, mainly 'WISKAWAY'® 7500H (see p.3) but also some 'WISKAWAY'® 6000H (see p.5). We have serviced these twice and have also moved some of them.*



3. The Royal Alexandra Children's Hospital in Brighton. 58 parents' wall beds supplied and installed, all 'WISKAWAY'® 7500H (see p.3) Since supplying and installing these Visitor wall beds we have serviced them.



4. The Children's Hospital at Queen Alexandra Hospital in Portsmouth. 60 'WISKAWAY'® 7500H parents' wall beds supplied and installed (see p.3). Since supplying and installing these Visitor wall beds we have serviced them.

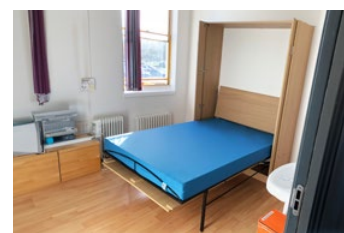


Choice of Visitor Bed Mattresses

To complement our range of 'WISKAWAY'® Visitor Wallbeds, we offer a choice of mattresses - all flame retardant to Ignition Source 5. The two most popular choices are our 'FLEXICA'® Foam mattress (A)



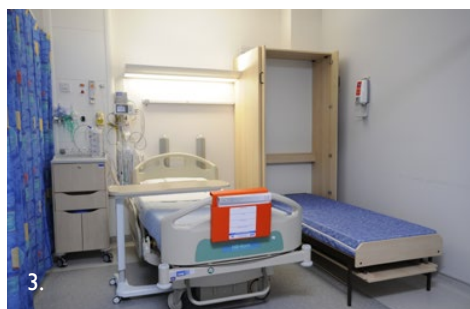
with a replaceable, breathable wipe-clean/waterproof cover (Ignition Source 7 also available) and our high specification 'MEDIFLEX'® Foam mattress (B) also with a replaceable wipe-clean/waterproof cover.



Wallbed Housing Finishes and (optional) Matching Furniture

Our 'WISKAWAY'® Visitor Wallbed housings and (optional) matching furniture come in a wide choice of sizes and finishes, ranging from wipe-clean MFC, to plastic laminates. We also offer a choice of 10 bed frame colours - (page 6).

AN INVESTMENT, NOT A COST!
'WISKAWAY'® Wallbeds pay for themselves over their long service lives.



We offer a whole range of counterbalanced, heavy-duty, single, double and made to measure 'Vertical' 'WISKAWAY'® Visitor Wallbeds, in 10 bed frame colours - (see back page) and a wide choice of housing finishes.

They provide the 'ultimate' solution in terms of Infection Control, Health & Safety, Manual Handling, Flame Retardancy, durability, comfort, convenience, space-efficiency and value for money, to accommodating members of patients' families, carers, or on-call staff overnight.

When properly planned into Ward refurbishment and new-build projects, 'WISKAWAY'® Visitor

Wallbeds can be located right next to the patients' beds and within each curtained off area in the bays and cubicles.

Designed to be fixed to the wall behind* (but they can easily be unfixed and moved - see caption below) and used every night with a sprung, or foam mattress, they can be whisked away effortlessly and in literally seconds (in an emergency, for instance) complete with all the bedding, including the pillows, into a compact, unobtrusive, wipe-clean, integral housing.

This eliminates the need for staff to trundle temporary beds to and fro and make them up/unmake them each evening/morning and leads to

various Health & Safety and Manual Handling benefits, as well as to substantial time and cost savings, including lower Ward laundry bills.

A further bonus is a marked improvement in the daytime appearance and spaciousness of the Wards, Bays and Cubicles.

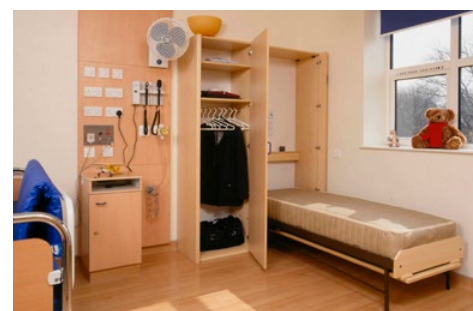
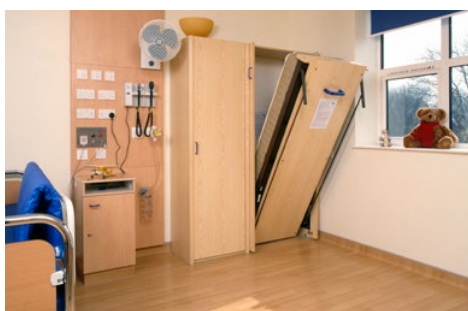
Fully counterbalanced and equipped with automatically opening and retracting legs and other safety features, our heavy-duty 'WISKAWAY'® Visitor Wallbed frames are guaranteed for 10 years and have been specifically engineered for a 25 year - plus service life, subject to servicing - we recommend just once every 5 years. Although we offer a whole range of

heavy-duty 'Vertical' 'WISKAWAY'® Visitor Wallbeds, model 7500H has proved the most popular with our Hospital and Hospice customers.

Illustrated above is 'Vertical' 'WISKAWAY'® 7500H on Ward 75 at the Royal Manchester Children's Hospital, where over 200 were installed in the Summer of 2009. These beds have been serviced several times and we have also since relocated some of them.*

The latest (2nd generation) 'WISKAWAY'® 7500Hs, have a Back Rest which automatically deploys and retracts as the bed is lowered and raised, enabling the user to sit up in bed and read, or watch TV - (see picture B on p.2).

Illustrated above: 'Vertical' 'WISKAWAY'® 7500H Parents' Wallbeds (in a wipe-clean Range 'A' simulated 'Maple' MFC finish) on a typical 4-bedded bay on Ward 75 at the new Royal Manchester Children's Hospital in 2009 - (pics 1 & 2). *In December 2020, we serviced and relocated all 24 of these beds from Ward 75 on the ground floor to Ward 86 on the 3rd floor, to make way for an expanded A&E Dept. An extra deep version of model 7500H to fit over/around a column - (pics 3 & 4).



Optional Matching Furniture

To complement our 'Vertical' 'WISKAWAY'® 7500H Visitor Wallbeds, we can supply our (optional) matching Wardrobe/ Locker 7600H in a variety of widths, heights, depths and finishes, with a choice of internal configurations (shelving, hanging, etc.) and optional digital/key/coin operated locks.

Typical examples are illustrated above on the new Paediatric Oncology Unit (2003) at the old Alder Hey Children's Hospital in Liverpool*, where the widths of the Wardrobes/Lockers were varied to fit the differing available spaces.

We can also supply sloping tops and other matching furniture, such as open shelf units, worktops, etc.

Dimensions are for standard 7500H sizes (without matching furniture) but can be varied as required

Mattress Width	Cabinet Width	Distance From Wall to Foot End of Bed	Mattress Length	Cabinet Height	Cabinet Depth
(2ft.3ins.) 700mm	830mm	2060mm	(6ft.3ins.) 1900mm	2000mm	500mm
(2ft.6ins.) 750mm	890mm	2060mm		2000mm	500mm
(3ft.) 900mm	1045mm	2060mm		2000mm	500mm
(4ft.) 1200mm	1350mm	2060mm		2000mm	500mm
(4ft.6ins.) 1350mm	1500mm	2060mm		2000mm	500mm
(2ft.3ins.) 700mm	830mm	2160mm	(6ft.6ins.) 2000mm	2100mm	500mm
(2ft.6ins.) 750mm	890mm	2160mm		2100mm	500mm
(3ft.) 900mm	1045mm	2160mm		2100mm	500mm
(4ft.) 1200mm	1350mm	2160mm		2100mm	500mm
(4ft.6ins.) 1350mm	1500mm	2160mm		2100mm	500mm

*Since these pictures were taken, Alderhey Hospital has moved to a new adjacent site.

Illustrated above: 'Vertical' 'WISKAWAY'® 7500H Parents' Visitor Wallbeds and matching Wardrobes/Lockers 7600H (in a wipe-clean Range 'A' simulated 'Light Ash' MFC finish) on the new Oncology Unit (2003) at the old Alder Hey Children's Hospital in Liverpool - (see also front cover).



An alternative to our 'Vertical' 'WISKAWAY'® Visitor Wallbeds are our *sideways-folding* 'Horizontal' 'WISKAWAY'® Visitor Wallbeds.

Although we offer a whole range of heavy-duty 'Horizontal' 'WISKAWAY'® Visitor Wallbeds, model 6000H is the most popular choice with our many Hospital and Hospice customers, is available in single, double and in made-to-measure sizes and comes in the same wide choice of finishes, as 'Vertical' model 7500H.

For added comfort, the single 6000H can be fitted with a lift-up top, as shown above (main picture).

RADIATOR BED Model 6000R

We are also able to offer a special version, the 'WISKAWAY'® 6000R,

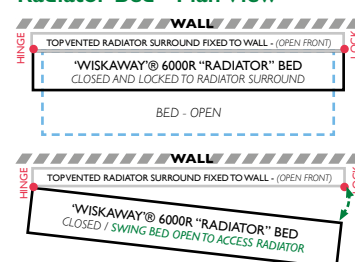
Dimensions are for standard 6000H sizes but can be varied as required

Mattress Width	Cabinet Height	Distance From Wall to Side of Bed	Mattress Length	Cabinet Length	Cabinet Depth
(2ft.6ins.) 750mm	1030mm	990mm	(6ft.3ins.) 1900mm	2100mm	400mm
(3ft.) 900mm	1160mm	1120mm		2100mm	400mm
(4ft.) 1200mm	1450mm	1410mm		2100mm	400mm
(4ft.6ins.) 1350mm	1630mm	1590mm		2100mm	400mm
(2ft.6ins.) 750mm	1030mm	990mm	(6ft.6ins.) 2000mm	2200mm	400mm
(2ft.6ins.) 900mm	1160mm	1120mm		2200mm	400mm
(3ft.) 1200mm	1450mm	1410mm		2200mm	400mm
(4ft.6ins.) 1350mm	1630mm	1590mm		2200mm	400mm

first developed for the new Bristol Royal Hospital for Children, which can be sited in front of radiators, thus making use of wall space which would otherwise be unusable, whilst still allowing full access to the radiators behind for maintenance.

When required, the bed fixings on one side can be 'unlocked', allowing the bed to be swung out of the way, (on castors), thanks to hinged fixings, on the other side, to expose the radiator behind for cleaning and maintenance.

Radiator Bed - Plan View



Illustrated above: Horizontal 'WISKAWAY'® 6000H Parents' Wallbeds (in a wipe-clean Range 'A' White MFC finish), at King's College Hospital in London (2008). These beds have since been serviced.



Optional Matching Furniture

To complement our 'Horizontal' 'WISKAWAY'® 6000H Parent's Wallbeds, we are able to supply matching Top Box Storage Units and/or Side Cupboards 6600H.

These can be produced in a variety of configurations, depending on the client's requirements. A typical configuration would comprise of a Top Box Storage Unit with an internal shelf, at each end of the bed and open shelving in between.

This was the original requirement for the Parents' Wallbeds supplied for the refurbished 'Rays of Sunshine' (formerly 'Mountbatten')

Ward at King's College Hospital in London (pictures 3 and 4 above). In the event, a number of these wall beds were fitted back to back in adjacent bays, underneath half-glazed partitions. These beds were supplied without Top Box Storage Units, but with a lift-up top instead (see previous page). In other bays and cubicles the presence of service trunking, windows and other obstacles precluded full length Top Box Storage Units. These were consequently produced in a variety of bespoke sizes to fit the available spaces (pictures 1 and 2 above). We have since serviced all these beds.

Contact Us:

www.hospitalvisitorbeds.co.uk
info@hospitalvisitorbeds.co.uk
Helpline: 020 7439 1066

Hospital Visitor Beds,
14 Cumberland Mills,
London E14 3BH

DOWNLOAD OUR
FREE VISITOR BED,
SPECIFIERS GUIDE



WEBSITE



GUESTBEDS



Hospital Visitor Beds

High Performance, Cost and Space Saving Hospital
& Hospice Visitor Wall Beds and Guest Beds.

Illustrated above: 'Horizontal' 'WISKAWAY'® 6000H Parents' Wallbeds and Matching Top Box Storage Units, each with one compartment fitted with a coin operated lock, on the refurbished 'Rays of Sunshine' (formerly 'Mountbatten') Ward at King's College Hospital, in London.

Choice of Bed Frame Colours



2. White, 3. Mid Metallic Blue*, 4. Ivory, 6. Metallic Anthracite*, 7. Black, 10. Red, 13. Light Blue*, 14. Dark Blue, 15. Aluminium, 17. Dark Grey.

IMPORTANT Measurements: All dimensions quoted in this brochure are approximate. Colours: Owing to the limitations of the printing process some variations may occur between the actual and printed colours. Trade Descriptions Act: Care has been taken to ensure that all descriptions and specifications are correct at the time of going to press- (May 2025). In keeping with our policy of continuous product improvement, we do however, reserve the right to alter designs, colours, materials, fabrics and prices without prior notice, as circumstances dictate. © Hospital Visitor Beds 2025.