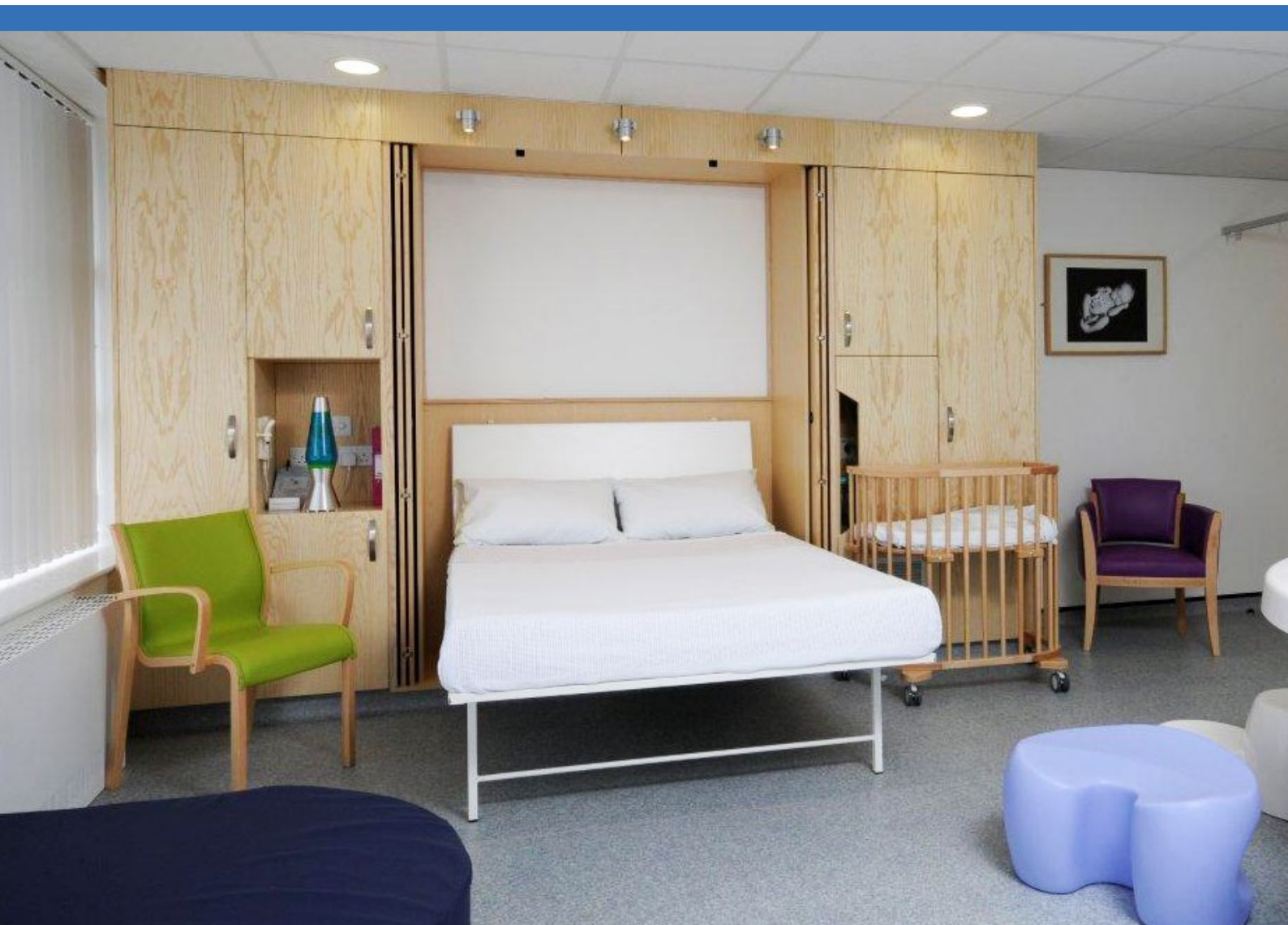


FULL SPARES
& AFTERSALES
SERVICE

BED FRAME GUARANTEE
10
YEAR

HIGH PERFORMANCE 'NEAT-A-WARD'® PATIENT WALLBEDS

FOR MIDWIFE-LED BIRTHING UNITS



Hospital Visitor Beds

High Performance, Cost and Space Saving Hospital
& Hospice Visitor Wall Beds and Guest Beds.

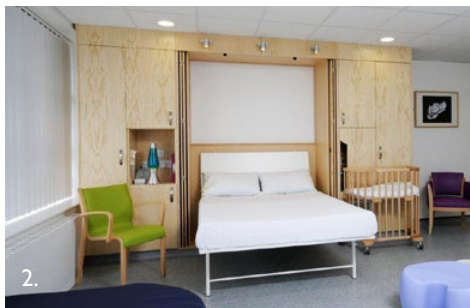


WEBSITE



Visit: www.hospitalvisitorbeds.co.uk | Email: info@hospitalvisitorbeds.co.uk | Helpline: 020 7439 1066

Hospital Visitor Beds, 14 Cumberland Mills Square, London E14 3BH



✓ Instantly Available Rest/Overnight Facilities For Birthing Units

Our high performance 'NEAT-A-WARD'® Patient Wallbeds have been specially developed for use in the new generation of 'no hospital bed' Midwife-led Birthing Centres, to provide safe, practical, cost-effective, comfortable and instantly accessible, rest and overnight facilities, when required, in rooms designed to appear to have no bed and look more like a smart, spacious hotel room, rather than a hospital room.

✓ Double Beds - So Partner Can Stay With The Patient Overnight

When, not in use, these special counterbalanced Patient wall beds are designed to be pivoted away *fully made-up* into a wall unit* - (see also back page), but can be deployed in literally seconds, when needed. *Double*, rather than single beds are usually provided, so that the patient's partner can stay with them overnight – (see images 1-4).

✓ Fully Compliant With Multiple Additional Benefits

Our 'NEAT-A-WARD'® Patient Wallbeds are fully compliant, meeting all Infection Control, Health and Safety, Manual Handling and Flame Retardancy requirements. These beds have been specifically engineered to withstand long-term, heavy duty, daily use in Hospitals and don't just save space, but are designed to offer a range of additional benefits (to

both patient, partner and Ward staff), including safety, comfort, ease-of-handling, durability, easy nursing access, cost and time savings for staff and value for money. 'NEAT-A-WARD'® Patient Wallbeds set the standard for the sector.

✓ Ultra-strong Construction - 10 year Bed Frame Guarantee

'NEAT-A-WARD'® Patient Wallbeds are made from hand-welded, powder-coated steel, with a unique, pre-tensioned woven steel mesh base (no wooden slats to break!). The sleeping height can be varied, depending on the length of the front and back legs specified, when ordering, to allow for easier nursing access – (see also image 4). Designed for a 25 year-plus service life, subject to periodic servicing (we recommend just once every 5 years) 'NEAT-A-WARD'® Patient Wallbed frames will comfortably cope with loads of up to 200Kg (singles) and 400kgs (doubles) and are guaranteed for a full 10 years, but will last much longer.

✓ Easy to Clean

Our 'NEAT-A-WARD'® Patient Wallbeds and wipe-clean/waterproof 'MEDIFLEX'® Mattresses with *removeable* (zip-on/zip-off) covers, can be cleaned and disinfected, just like conventional Hospital beds and Mattresses, using the same (your usual) cleaning agents.



HIGH PERFORMANCE 'NEAT-A-WARD'® PATIENT WALLBEDS



✓ Multiple Safety Features

Safety features include full counterbalancing, automatically opening and retracting front legs and back rest and, because these beds will be used by a constantly changing stream of patients, visitors and staff, step-by-step, wipe-clean, laminated safety/operating instructions, permanently fixed to and prominently displayed on every bed.

✓ Choice of Sizes and Bedframe Colours With Handy Back Rest

'NEAT-A-WARD'® Patient Wallbeds come in single, double and made-to-measure sizes, in a choice of 10 bedframe colours (see back page) and, for added comfort and convenience, complete with a back rest, which deploys and retracts automatically as the bed is lowered and raised and allows the user(s) to sit up in bed and read, or watch TV. There is a choice of a solid back rest - (images 1-2) - or a tubular steel one - (image 4).

✓ Wipe-clean/waterproof 'MEDIFLEX'® Mattresses

Our high specification wipe-clean/waterproof 'MEDIFLEX'® foam mattresses are flame retardant to Ignition Source 5, come with zip-on/zip-off replaceable covers and can be cleaned just like a conventional Hospital mattress using your usual cleaning agents, as can our bedding straps.

✓ FREE Pre-sales Advisory Service

We can provide FREE expert pre-sales advice to Hospitals, PFI contractors and Architects, regarding the best model(s)/size(s) and sleeping heights for the project in-hand and can also supply beds for mock-up rooms, on larger projects.

✓ Full Spares and Aftersales Service

We provide full aftersales support, including spare parts/repairs for the bedframes, an optional installation service and optional periodic servicing (we recommend just once every 5 years) to help extend the already impressively long (25 year-plus) service lives of our Wallbeds.

✓ Easy and Intuitive to Use

'NEAT-A-WARD'® Patient Wallbeds come with a really comfortable wipe-clean/waterproof 'MEDIFLEX'® mattress, are designed to be

pivoted-away (with all the bedding, including the pillows), are easy and intuitive to operate and, being counterbalanced and fitted with automatic leg action and can be folded away, *fully made-up*, effortlessly and in literally seconds - (in an emergency, for instance). Special wipe-clean, flexible, bedding retaining straps - (see also image 4) - hold the mattress and all the bedding in place, when the bed is folded away.

✓ Benefits for Patients/Partners

The 'NEAT-A-WARD'® Patient Wallbed can be ready to use in seconds (just open the housing doors, lower the bed and release and store the bedding retaining straps, safely out of the way), provides a high degree of comfort, is suitable for both short, or longer stays and can be operated by the patient, without the need to call a member of staff, as it comes with full safety/user instructions.

✓ Benefits for Staff

There are significant manual handling and time saving benefits, as a result of not having to trundle temporary beds to and fro and make them up/unmake them. Laundry bills are also reduced, due to the bedding staying on the bed and off the floor. A convenient sleeping/nursing height can be specified, when ordering. A further advantage is the neat and spacious appearance of the rooms when the bed is stowed away.

Because these beds can be pivoted away with all the bedding, they can be made-up by the housekeeping staff, during quieter periods between patients, then whisked away ready for immediate use, if required, by the next patient.

✓ Real Value for Money

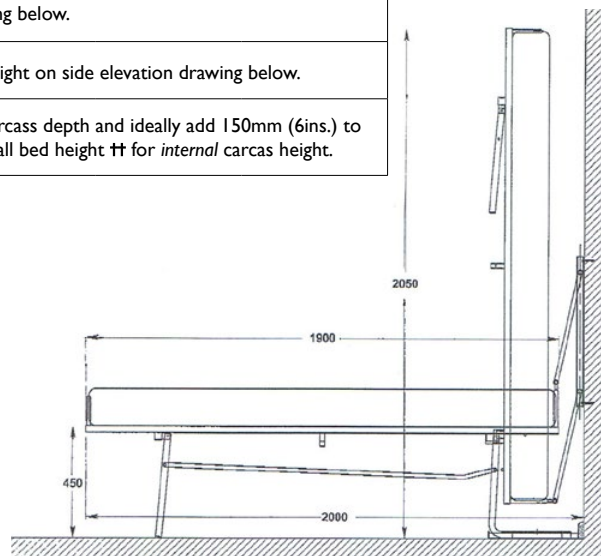
- AN INVESTMENT RATHER THAN A COST!

Subject to being properly maintained, 'NEAT-A-WARD'® Patient Wallbeds will give 25 years-plus of trouble-free service. This represents a massive cost saving! So, 'NEAT-A-WARD'® Patient Wallbeds really are an investment rather than a cost.

DIMENSIONS FOR THE 'NEAT-A-WARD'® 190* & 200††

Sleeping (mattress) widths	(2ft.3ins) 700mm	(2ft.6ins) 750mm	(3ft. / 3ftXL) 900mm	(4ft.) 1200mm	(4ft.6ins) 1350mm	(5ft.) 1500mm	(6ft.) 1800mm
Overall wallbed widths	705mm	780mm	935mm	1240mm	1390mm	1530mm	1870mm
The 'NEAT-A-WARD'® Patient Wallbed is available in two lengths: 1900mm, ('NEAT-A-WARD'® 190*) and 2000mm, (NEAT-A-WARD'® 200††).							
Sleeping (mattress) length*	1900mm	*Standard bed dimensions detailed on side elevation drawing below.					
Sleeping (mattress) length ††.	2000mm	†† Add 100mm (4ins.) to overall bed length AND folded height on side elevation drawing below.					
Housing Dimensions	For a suitable housing (with independent doors) allow 500mm (20ins.) for carcass depth and ideally add 150mm (6ins.) to overall bed width for <i>internal</i> carcass width and 100-150mm (4-6ins.) to overall bed height †† for <i>internal</i> carcas height.						

Because we make these beds individually for each project, the desired sleeping height can be specified, when ordering, by increasing/decreasing the length of the front and back legs (this will also affect the overall height when folded away). If it is intended to mount the bed on a plinth, inside a housing, the back legs can be made shorter than the front legs by the height of the plinth - (see also side elevation sketch in top left hand corner of image 5 on back page).

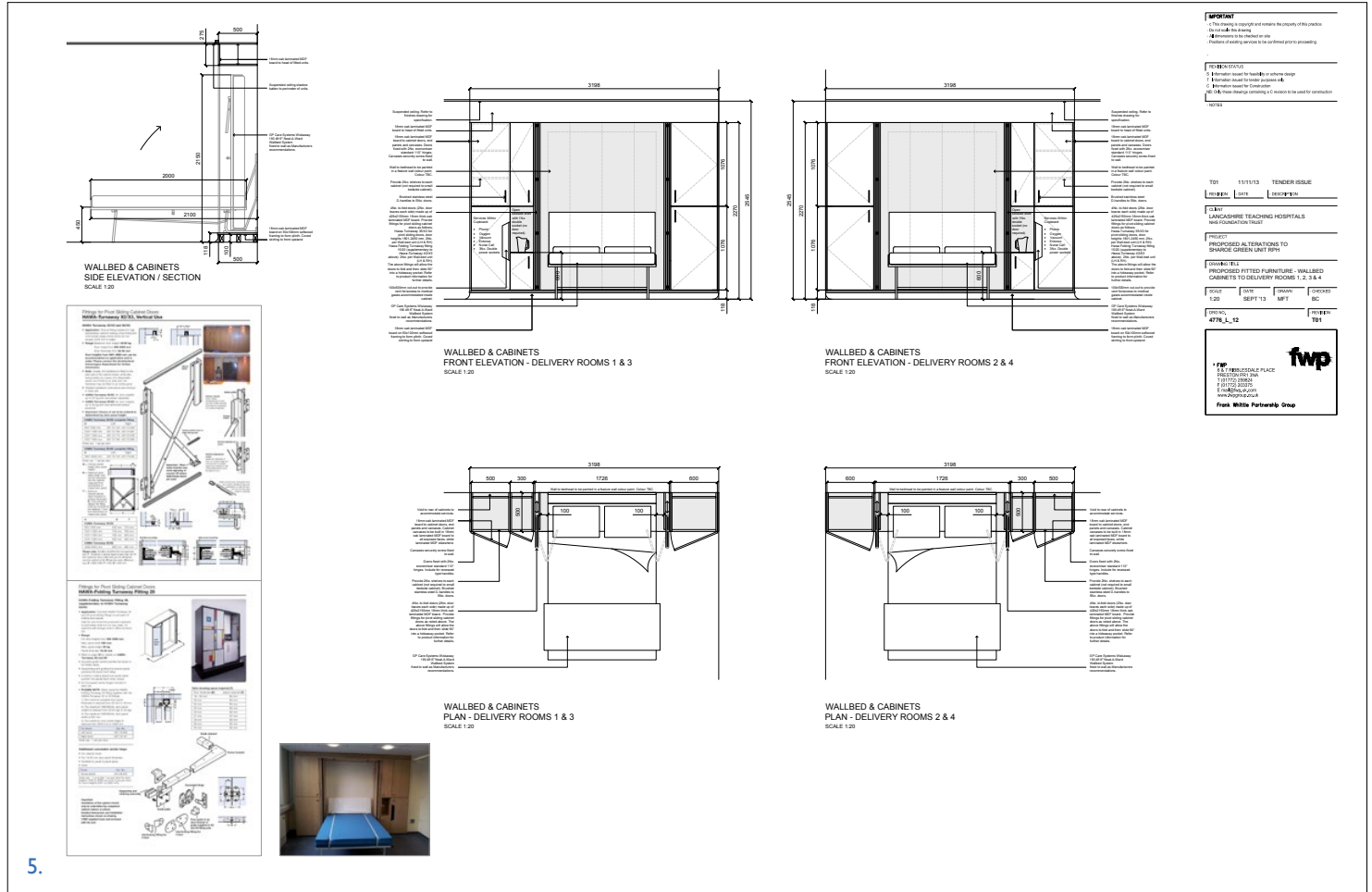


HIGH PERFORMANCE 'NEAT-A-WARD'® PATIENT WALLBEDS

Wall Units to House the 'NEAT-A-WARD'® Patient Wallbeds

*The wall units are usually architect designed, for a particular project - see typical drawings below of wall units for the Midwife-led birthing unit at Preston Royal Infirmary - and are installed by the contractor - (image 5, copyright: The Frank Whittle Partnership Group).

In addition to housing the wall bed, they provide storage space and conceal various medical equipment and services - (see also image 1, page 2). To deploy the bed, first open the two bifold doors at 90 degrees to the housing and push them into the 'pockets' on either side of the bed then lower the bed. The front legs and back rest will deploy automatically.



Choice of Bed Frame Colours



2. White, 3. Mid Metallic Blue*, 4. Ivory, 6. Metallic Anthracite*, 7. Black, 10. Red, 13. Light Blue*, 14. Dark Blue, 15. Aluminium, 17. Dark Grey.

Housings for Smaller Projects

For smaller projects and or where architect designed housings are not appropriate we are able to supply an alternative model complete with integral housing and optional matching furniture in the form of our 'WISKAWAY'® Visitor Wallbeds. Scan the QR code on the right for further details - (see also images 6, 7 & 8 below) - or call our Helpline 020 7439 1066.

WALLBEDS



Image 5: Typical architect designed housings to accommodate the Double 'NEAT-A-WARD'® Patient Wallbeds at Preston Royal Infirmary.
Images 6 - 8: Double Vertical 'WISKAWAY'® 7500H, Hospital Visitor Wallbed and 'MEDIFLEX'® Mattress on Neonatal unit at Milton Keynes General Hospital.